

GoldenEar's New Triton Seven "Stunning...Scores a Perfect 10"

— Steve Guttenberg, *CNET The Audiophile*

"Forget \$60,000 Speakers, we'll take the GoldenEar Triton Seven...it has totally nailed it"
— Caleb Denison, *Digital Trends*



Triton Seven Tower

Some of GoldenEar's Extraordinary Series of Awards:



Triton Seven High-Resolution Tower Loudspeaker

The new Triton Seven brings Speaker-of-the-Year Award winning Triton Series performance into a more compact size and even more affordable price range. GoldenEar's Triton Towers have set new performance and value standards all around the world. The new Triton Seven follows in this auspicious tradition. Although it is the first Triton Tower without a built-in powered subwoofer, it still achieves superbly deep, subwoofer-like impactful bass performance by combining advanced technology drivers with our highly evolved and sophisticated Frequency Dependent Damping bass loading technology.

The Seven's unique cabinet shape is both acoustically purposeful as well as strikingly attractive. Its stylish rearward rake, in conjunction with the complex crossover, both aligns the driver array precisely for a coherent wave-launch directed at ear level at the listening position, as well as results in non-parallel front and rear baffles for better control of internal standing waves. And, of course, the non-parallel side cabinet walls and slanted top provide the same acoustical performance benefit, as well as looking great. The Seven's precise and totally boxless imaging characteristics are further enhanced by the narrow front baffle, as well as the diffractionless designer grille cloth sock which adds additional sheer damping to the cabinet. In addition, the beautifully sculpted piano-gloss black base adds significantly to the Seven's dynamic stability.

Like the signature Triton Two, the Seven combines a D'Appolito array of bass/midrange drivers, which surround the same, now famous, High Velocity Folded Ribbon Driver (HVFR™), used in both the Triton Two and Three. The HVFR™ tweeter functions by pressurizing the air, rather than pushing and pulling it, for much better impedance matching with the air in the room. This results in superb extension combined with a silky smooth non-fatiguing character, which is both unique and extraordinary. The spiderleg cast-basket 5.25" bass/midrange drivers, newly developed at our Arnprior, Canada engineering facility, have been specifically designed for exceptionally long-throw for tremendous dynamic range and extraordinarily deep bass response.

“GoldenEar’s new Triton Seven is downright unbelievable...gets my vote for the high-end audio bargain of CES”

— Chris Martens, *HiFi+*



Triton Seven Tower

Invisa In-Walls/In-Ceiling

SuperCenter X

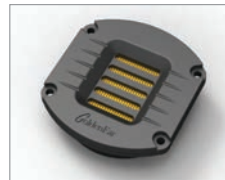
ForceField Sub

In addition, their precisely curved cone combined with a specially formulated polypropylene cone material and unique apical glue bonding technique delivers superb high-definition midrange clarity and presence. Like the two larger Tritons, the Seven incorporates two side-mounted sub-bass radiators that are located on either side of the cabinet down near the floor for optimum coupling to the room. The Triton Seven's high-resolution sonic performance makes it perfect for the highest quality two channel systems as well as the best multi-channel music and home theater systems. As with all GoldenEar speakers, development work is conducted at our Arnprior engineering facility utilizing our full-size anechoic chamber, which is an exact duplicate of the chamber at the NRC in Ottawa, Canada, in combination with intense critical listening.

TRITON SEVEN SPECIFICATIONS

Dimensions: Speaker: 40-1/4" H x 5-3/4" W (front) x 7-1/4" W (rear) x 11" D. **Base Dimensions:** 10-1/2" W x 14-1/2" D. **Frequency Response:** 29 Hz – 35 kHz. **Efficiency:** 89 dB. **Nominal Impedance:** Compatible with 8 ohms. **Driver Complement:** Two 5-1/4" cast-spiderleg-basket mid/bass drivers, One High-Velocity Folded Ribbon (HVFR™) tweeter, Two 8" planar sub-bass radiators. **Rec. Amp.:** 10 – 300 Watt/channel.

State-of-the-Art GoldenEar Drivers



High-Velocity Folded Ribbon Tweeter (HVFR™)

- Tweeter Diaphragm is a High Temperature Film
- High-Power Neodymium Magnets
- Squeezes/Pressurizes Air Instead of Pushing It
- Greater Control, Smoother More Extended Response
- Vanishingly Low Distortion
- Dramatically Improved Dynamic Range and Detail
- Superb Dispersion Characteristics
- Superior Impedance Match to Air



High-Definition Cast-Basket Bass/Midrange Drivers

- GoldenEar Multi-Vaned Phase Plug (MVPP) Design
- Rigid Free-Flow Cast-Basket Chassis
- Proprietary Computer Optimized Cone Topology
- High-Gauss Magnet Assembly
- 1" High-Temperature Kapton Former Voice Coil
- Extremely Extended Resonant-Free Linear Frequency Response Characteristics



Infrasonic Planar Sub-Bass Radiator

- Pressure-Coupled Loading Extends Usable Bass Performance to the Infrasonic Region
- Performs Like a Well-Tuned Transmission Line but with Superior Transient Performance and Control

Recommended System Components

GoldenEar Technology has engineered and voiced all of our speakers to perfectly complement and match each other in order to give you the greatest flexibility in creating your system.

CENTER CHANNELS

SuperCenter X, SuperCenter XL, SuperSat® 3C, SuperSat® 50C, SuperSat® 60C

SURROUNDS

Aon 2, Aon 3, SuperSat® 3, SuperSat® 50, SuperSat® 60, Invisa® 525, Invisa® 650, Invisa® HTR 7000, Invisa® MPX MultiPolar

SUBWOOFERS

ForceField 3, ForceField 4, ForceField 5

For more info on other GoldenEar products:



GoldenEar Technology®
A Passion for Sonic Perfection™

www.goldenear.com

PO Box 141, Stevenson, MD 21153 • (410) 998-9134

Follow us on: [facebook.com/goldenear](https://www.facebook.com/goldenear) & twitter.com/goldeneartech

© GoldenEar Technology. All right reserved.

Reproduction in whole or in part without our express permission is prohibited.