

# GoldenEar's™ Amazing SuperSubs are a "Subwoofer to Die For"!

– Sound & Vision Magazine

GoldenEar's™ new SuperSub™ Series subwoofers are ultra-high performance compact subwoofers which incorporate many recently developed unique and advanced technologies and components. The goal was to create beautifully styled, finely finished, reasonably sized subwoofers that could generate very low frequency pressure waves of extremely high amplitude, while delivering accurate and precise low frequency performance that is both highly impactful and extremely musical.

**"Sonic bliss ... remarkably powerful ... THEY KICK ASS, totally ... down to the infrasonic"**

– Mark Henninger, AVS

In order to achieve this, we have incorporated a unique, patented†, 360 degree dual-plane inertially-balanced driver and sub-bass radiator topology, combined with a very advanced electronics package. With two active drivers separated horizontally in space, as well as two passive radiators separated vertically, the driver to-room-coupling is distributed much more smoothly, for in-room bass performance that can't typically be achieved with a single subwoofer.

The electronics packages that drive the fully balanced array are a 1600 watt (XXL) and 1400 watt (X) Class D Digital amplifier based on the design originally developed for the GoldenEar Triton One tower. Features: Discrete multi-band limiting, phase perfect equalization, fully balanced and advanced reconstruction filters, and a strong focus on keeping latency to an absolute minimum.

Sonically, the result is rock-solid bass response that is both exceptionally fast and tuneful for music and extraordinarily deep and powerful, in order to effortlessly reproduce the most extrememovie sound effects.

**"Bone crushing bass ... sure to be coveted"**

– Tom Andry, Audiobolics



SuperSub X



SuperSub XXL

Some of GoldenEar's™ Extraordinary Series of Awards:



†Patent No.: US 9,462,391 B2

“The SuperSub XXL has looks to kill and is built to ROCK THE HOUSE when duty calls”

– Sound & Vision

## SUPERSUB XXL

Housed within the gorgeous piano gloss black enclosure are two horizontally-opposed 12" ultra-long-throw active drivers and two vertically-opposed 15" x 13" planar infrasonic radiators. This dual-plane, patented† dynamic inertial-balancing preserves and focuses all the energy produced by the transducers in order to more effectively move the air in the room, rather than wasting energy moving the box. It also enables you to hear all the fine subtle details in your recordings. The benefit is a new achievement in state-of-the-art subwoofer performance that, not only “rocks the house”, as Big Picture Big Sound’s Chris Boylan raved, but is also, “strong, pure and controlled” as Sound & Vision’s Mark Fleischman wrote.

## SuperSub X is “a true compact wonder”

– Mark Henninger, AVS

## SUPERSUB X

Like the SuperSub XXL, the ultra-compact SuperSub X utilizes the same dual-plane, patented† inertially-balanced driver array, but instead employs two horizontally-opposed 8" ultra long throw active drivers and two vertically-opposed 10-1/2" x 9-1/2" planar infrasonic radiators.

## STATE-OF-THE-ART GOLDENEAR DRIVERS



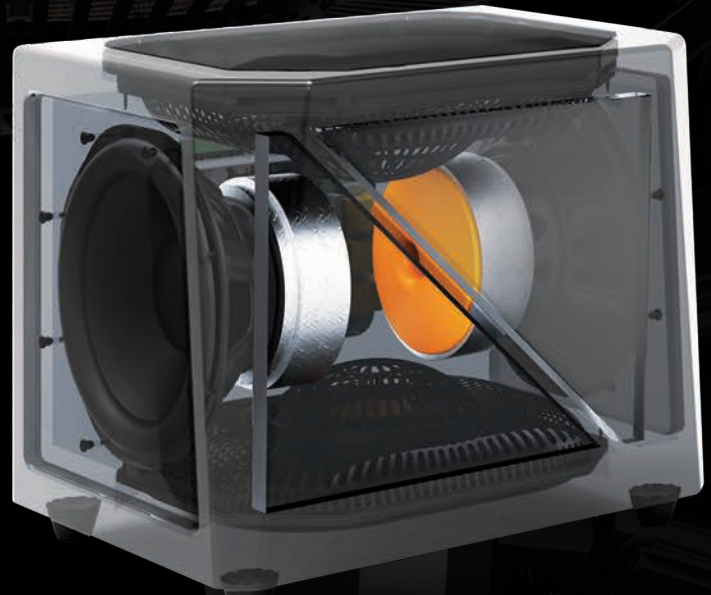
### QUADRATIC PLANAR INFRASONIC RADIATOR

- Pressure-Coupled Loading Extends Usable Bass Performance to the Infrasonic Region
- Performs Like a Well-Tuned Transmission Line but with Superior Transient Performance and Control



### ULTRA-LONG-THROW SUB-BASS DRIVER

- Ultra-Long Throw High-Output Bass Driver for Powerful Room-Shaking Bass
- Superior Transient Performance for Exceptional Detail
- Computer Optimized Ultra-Stiff Fiber Cone
- Massive High-Gauss Magnet Assembly



Best of all is GoldenEar’s signature combination of high-end performance, superb build quality, gorgeous styling and extraordinary value. Nobody does this better than GoldenEar. In the words of AVS’s Mark Henninger, “The SuperSub XXL ups the ante down low”. Or as Secrets of Home Theater’s Robert Kozele clearly stated, “... this is a bargain for a sub of this performance”. Visit your nearest GoldenEar™ dealer and experience this supersub today.

### SUPERSUB X SPECIFICATIONS\*

**Dimensions:** 14" W x 12-3/4" H (w/ feet) x 13-1/4" D. **Frequency Response:** 12 Hz – 250 kHz. **Driver Complement:** Two 8" long-throw high-output bass drivers, Two 10-1/2" x 9-1/2" quadratic planar infrasonic radiators. **Amplifier:** 1400 Watt ForceField digital amplifier. **LFE Line-Level Input:** Unfiltered (no low pass), direct-coupled. **Right/Left Line-Level Input:** Variable Low-Pass from 40 Hz – 150 Hz. **Fuse Size:** 6-amp 250-volt slow blow fuse (110-volt version) 4-amp 250-volt slow-blow fuse (240-volt version). **Power Requirements/Consumption:** Low Voltage Version - 120 V at 50 or 60 Hz/1400 Watts. High Voltage Version - 240 V at 50 or 60 Hz/1400 Watts (Approved for NA (TUV) and the CE market).

### SUPERSUB XXL SPECIFICATIONS\*

**Dimensions:** 19-3/4" W x 17-5/8" H (w/ feet) x 15-7/8" D. **Frequency Response:** 10 Hz – 250 kHz. **Driver Complement:** Two 12" long-throw high-output bass drivers, Two 13" x 15" quadratic planar infrasonic radiators. **Amplifier:** 1600 Watt ForceField digital amplifier. **LFE Line-Level Input:** Unfiltered (no low pass), direct-coupled. **Right/Left Line-Level Input:** Variable High-Pass from 40 Hz – 150 Hz. **Fuse Size:** 8-amp 250-volt slow blow fuse (110-volt version) 6.3-amp 250-volt slow-blow fuse (240-volt version). **Power Requirements/Consumption:** Low Voltage Version - 120 V at 50 or 60 Hz/1600 Watts. High Voltage Version - 240 V at 50 or 60 Hz/1600 Watts (Approved for NA (TUV) and the CE market).

\*Specifications are subject to change without notice.

GoldenEar™

2621 White Road • Irvine, CA 92614  
www.goldenear.com 949-800-1800