



CANADA RETAIL PRODUCT CATALOG



The GoldenEar Voice

If an audio product were perfect, it would have no sound of its own. It would be invisible. It would have no “voice.” In the real world, DACs, amplifiers, turntables, and especially the transducers — microphones, phono cartridges, and loudspeakers — all have distinct sonic characters.

A competently finessed “voice” comes from consciously managing the sonic effect of every design decision and every part, and then coordinating the combined effect of all those many little imperfections into a whole, creating a voice with as little overt character as possible. At least, that’s the objective for all GoldenEar loudspeakers.

Speaker designers have different intentions as they set about fine-tuning a speaker. Recording studio monitors are often voiced to over-illuminate and intentionally provoke the engineer’s awareness of potential recording flaws, while some other speakers are voiced to grab your attention during the strange, emotional experience of listening while standing in a store.

The real difference between lesser and greater products is in their designers’ intentions, and in their ability to manage inevitable imperfections. Competent voicing doesn’t itself reduce the quantity of the imperfections, but rather it coordinates them into an extremely low-level, ignorable background with no features that shout for attention. That’s the goal shared by all GoldenEar speakers.



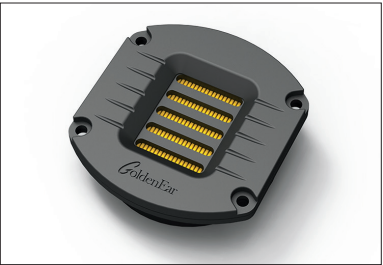
Technology

Several crucial components appear throughout the line, allowing GoldenEar speakers of all shapes, sizes, and configurations to sing with the same beautiful voice.

High-Velocity Folded Ribbon AMT Tweeter

Rather than pushing air like a traditional tweeter, an AMT tweeter propagates soundwaves and moves the air by squeezing it with its accordion-like pleated diaphragm.

Its efficiency, low mass, and large radiating area ensure lower distortion than other tweeter designs in its price range. These attributes contribute greatly to GoldenEar’s effortless sound and 3D imaging. Our most sophisticated speakers use a “Reference” version of this tweeter with a larger magnet structure for greater efficiency, control, and lower distortion.



High-Definition Cast-Basket/MVPP Midrange/Bass Drivers

For this crucial frequency range, nearly all GoldenEar speakers employ open but ultra-rigid cast-basket bass/midrange drivers, often in a D’Appolito array. A Multi-Vaned Phase Plug (MVPP) creates a single radiating surface for a more linear or even response. This technology contributes greatly to the uncolored sound that is so essential to GoldenEar’s voice.



Quadratic Bass Drivers

With their relatively long, narrow shape, these bass drivers are designed to maximize the cone surface area of GoldenEar’s slim and attractive enclosures, which diminish unwanted signal reflections, smearing, and cabinet resonances. When coupled to the built-in amplification used in our powered floorstanders, these Long-Throw drivers produce powerful but nuanced



bass. This highly efficient amp-driver combination also allows even modest audio/video receivers to achieve performance far beyond their rated power output.

Quadratic Planar Bass Radiators

Passive radiators are a more sophisticated and costlier alternative to ported designs. Our approach increases the volume of air the bass drivers “see” in the cabinet while greatly minimizing any negative effects and/or stresses within the speaker cabinet itself. Further, when ported woofers are subjected to demanding home-theater material, they can produce an unpleasant “chuffing” sound. This can’t happen with a passive radiator — there’s no pipe to whistle through. With GoldenEar’s Quadratic Planar Bass Radiator technology, the result is bigger, more muscular bass with fewer artifacts and more nuance.



Tested by Ear and in our Anechoic Chamber

Every GoldenEar speaker is thoroughly tested both by ear and with our own anechoic chamber modeled after the one found in the world-renowned Nation Research Council in Canada. This allows us to accurately and comprehensively assess optimal driver, cabinet, and crossover specifications for each of our components and finished speakers. Today, there are many means of measuring speaker drivers and completed speakers via computers and analyzers. These test devices strive to “simulate” anechoic response or conditions. Though these tests may save considerable expense and space, there is no adequate substitute for a true anechoic room — the only verifiably controlled and consistent means of testing and optimizing loudspeakers. GoldenEar is one of the few fortunate loudspeaker manufacturers to have an anechoic chamber of its own.

Floorstanding Loudspeakers

Our floorstanding loudspeakers epitomize the beauty of the GoldenEar “voice” and clearly express our performance-driven value ethos. The Triton Reference and the all-new T66 (see next spread) are “powered towers” with built-in powered subwoofers. While the bass gets bigger and more powerful as you move up the line, all Tritons are full-range speakers, and all use GoldenEar’s superb High-Velocity Folded Ribbon AMT tweeter and MVPP Midrange/Bass drivers. The Triton Reference and T66 employ even more refined “Reference” versions of these drivers. All Tritons deliver superb performance in both two-channel stereo and multi-channel home theater systems with eerily realistic, three-dimensional imaging. Proper attention has been paid to ensure well-extended lows blend seamlessly with their utterly transparent mids and silky-smooth highs.

Triton Reference \$15,000/pair

- (1) Reference High-Velocity Folded Ribbon AMT Tweeter
- (2) 6" High-Definition Cast-Basket Mid/Bass Drivers
- (3) 6" x 10" Long-Throw Quadratic Subwoofer Bass Drivers
- (4) 9.5" x 10.5" Back-Wave-Driven Radiators
- 1500W peak/750W RMS, DSP-Controlled
- Finish: Gloss Black

9.1" W x 19.4" D x 58" H
(with base, no spikes)
Base: 13.6" W x 22.2" D



T66 \$8,900/pair; \$9,300/pair in Santa Barbara Red

- (1) Reference High-Velocity Folded Ribbon AMT Tweeter
- (2) 4.5" High-Definition Cast-Basket Mid/Bass Drivers
- (2) 5" x 9" Long-Throw Quadratic Subwoofer Bass Drivers
- (2) 8" x 12" Back-Wave-Driven Radiators
- 1000W peak/500W RMS, DSP-Controlled
- Finish: Gloss Black or Santa Barbara Red

7.5" W x 14.75" D x 48.8" H
(with base, no spikes)
Base: 11.8" W x 17" D



Triton Five \$3,900/pair

- (1) High-Velocity Folded Ribbon AMT Tweeter
- (2) 6" Mid/Bass Drivers
- (4) 8" Passive Radiators
- Finish: Black Cloth, Gloss Black Top Cap/Base

8.1" W x 12.4" D x 44.3" H
(with base, no spikes)
Base: 11" W x 16.5" D



Triton Seven \$2,900/pair

- (1) High-Velocity Folded Ribbon AMT Tweeter
- (2) 5.3" High-Definition Cast-Basket Mid/Bass Drivers
- (2) 8" Passive Radiators
- Finish: Black Cloth, Gloss Black Top Cap/Base

7.3" W x 11.1" D x 40.3" H
(with base, no spikes)
Base: 10.5" W x 14.5" D



“The T66 can transform sound into sensation, and that is very special... It has just the right combination of truth and beauty... I just kept wanting more and more.”

—Steve Guttenberg, *The Audiophile*

The GoldenEar T66: A Singular Hero

The first time I heard a GoldenEar speaker was in January 2012 at the Las Vegas CES.

Being both an audio fan and longtime friend of Sandy Gross, I of course entered the GoldenEar exhibit room at the Venetian. As Sandy is famous for, he had the Triton Two speakers in a great Pass Labs based system, sounding beautiful and totally immersive — like giant headphones but so much better.

I was impressed with the speakers — and I was super-impressed with their introductory price.

Then musing on the experience as I walked down the very long Venetian hallways, I thought, “I must have heard the price incorrectly — they couldn’t be \$2,500 per *pair*. They must be \$2,500 each.” So, I ran (yes, I ran) back the 150 feet or whatever to the GoldenEar room and asked Sandy to verify that they were actually \$5,000 a *pair* — not such a steal, but seemingly far more likely.

Well, they really were \$2,500 per pair that first year — and that was the start of me, my kids, and many AQ employees buying GoldenEar products.

Fast forward to 2023 — almost four years since The Quest Group bought GoldenEar, and I’m more than pleased to witness the result of the very long development (blame COVID) of the new T66 speaker.

As with the first GoldenEar tower speaker, the T66 has built-in powered subwoofers, is a very similar thin-profile tower using an AMT tweeter in a D’Appolito arrangement with two midrange/woofers and two quadratic planar subwoofers. At first glance, that would seem to make the T66 just a warmed-over Triton Two (and later Triton Two+), but it’s actually all new, like when a new model car still looks a lot like the previous generation but has a gazillion changes underneath that mostly familiar facade — except maybe the superb cast-aluminum base, see-through perforated metal grille, and gloss black or red exterior do shout “new.”

I could fill up much of this page with how the tweeter, stronger cabinet, passives, crossover, amplifier, wire, being BiWireable, etc., etc., are all dramatic upgrades — but those are just symptoms proving that GoldenEar’s years of development work have paid off.

Unlike in 2012, GoldenEar has a stable of fine products — superb subwoofers (the new ForceFields 30 and 40 were the first proof of how serious I am about developing better-than-ever-speakers), superb architectural speakers, the widely acclaimed BRX bookshelf speakers, and several Triton passive and powered models.

But to me, the T66 is only partly the next logical step for a company whose most recent product has always raised the bar — for me, the T66 is a singular hero, a speaker worth founding a company on, as Sandy, Don, and Bob did 12 years ago with the Triton Two.

I believe the T66 to be one of the best under-\$10k-per-pair speakers in existence. Unlike a truly neutral cable or effective power product, there is no single best speaker. There are other members of the T66’s elite peer group, each of which has an advantage in some area. Richard Vandersteen, John DeVore, Alon Wolf, and others certainly prove that reality. However, the T66 has its own easy-to-appreciate advantages. For you, that might be the built-in subwoofers, or the discrete elegant profile, or “just” the overall at-your-service naturalness of the GoldenEar Voice.

Sincerely, 
William E. Low



Gloss Black
\$8,900/pair

Santa Barbara Red
\$9,300/pair

- (1) Reference High-Velocity Folded Ribbon AMT Tweeter
- (2) 4.5" High-Definition Cast-Basket Mid/Bass Drivers
- (2) 5" x 9" Long-Throw Quadratic Subwoofers
- (2) 8" x 12" Back-Wave-Driven Radiators
- 1000W peak/500W RMS, DSP-Controlled
- Finish: Gloss Black, Santa Barbara Red

7.5" (19.1cm) W x 14.75" (37.6cm) D x 48.8" (124.1cm) H (with base, no spikes)
Base: 11.8" (30cm) W x 17" (43.2cm) D

Bookshelf/Stand Mount Speakers

The BRX (Bookshelf Reference X) and Aon 3 are compact, high-performance bookshelf speakers carefully designed to provide a large and spacious presentation with superb three-dimensional imaging comparable to that achieved by our award-winning Triton Towers. The BRX earns its “Reference” name by using the 6" MVPP Midrange/Bass Driver and Reference High-Velocity Folded Ribbon AMT tweeter from the flagship Triton Reference. Lastly, the BRX and Aon 3 employ two side-mounted passive radiators to properly load the bass/midrange drivers for an open, uncolored midrange and well-extended bass.



BRX
\$2,450/pair

- (1) Reference High-Velocity Folded Ribbon AMT Tweeter
- (1) 6" Mid/Bass Reference Driver
- (2) 6.5" Passive Radiators
- Finish: Gloss Black

8.05" W x 12.3" D x 12.1" H



Aon 3
\$1,650/pair

- (1) High-Velocity Folded Ribbon AMT Tweeter
- (1) 7" Mid/Bass Driver
- (2) 8" Passive Radiators
- Finish: Black Cloth, Gloss Black Top Cap/Base

9" W x 11" D x 14" H



Subwoofers

Compact, but soul-stirring, GoldenEar’s ForceField and SuperSub subwoofers combine subtle musical detail with earth-shaking high-impact bass — all in attractive, room-friendly enclosures. The ForceFields each use a single, forward-firing driver, while the SuperSubs use two inertially balanced drivers on opposite sides of the cabinet to reduce cabinet resonances, improving performance even further. All GoldenEar subwoofers are designed to be subtle and invisible, allowing a string bass or a fighter jet’s roar to seem to come out of nowhere, and to unignorably do their job whether the pluck of a bass guitar or a giant’s footsteps are meant to move your soul.

SuperSub XXL \$3,500/each

- (2) 12" Bass Drivers
- (2) 13" x 15" Passive Radiators
- 2000W peak/1000W RMS amp
- Finish: Gloss Black

19.75" W x 15.9" D x 17.6" H (w/feet)



SuperSub X \$2,250/each

- (2) 8" Bass Drivers
- (2) 10.5" x 9.5" Passive Radiators
- 1500W peak/750W RMS amp
- Finish: Gloss Black

14" W x 13.25" D x 12.75" H (w/feet)



ForceField 40 \$1,550/each

- (1) 10" Bass Driver
- (1) 11" x 13" Passive Radiator
- 1000W peak/500W RMS amp
- Finish: Satin Black

13.3" W x 18.3" D x 14.7" H (w/feet)



ForceField 30 \$1,150/each

- (1) 8" Bass Driver
- (1) 9" x 11" Passive Radiator
- 1000W peak/500W RMS amp
- Finish: Satin Black

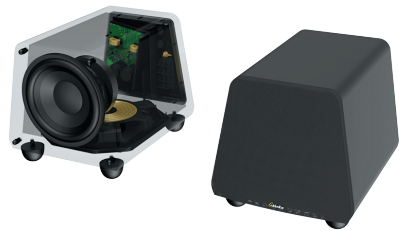
11.4" W x 16" D x 12.7" H (w/feet)



ForceField 3 \$850/each

- (1) 8" Bass Driver
- (1) 9" x 11" Passive Radiator
- 1000W peak/500W RMS amp
- Finish: Matte Black

11.4" W x 15.9" D x 11.5" H (w/feet)



“If music is your main passion,
you’ll love what the ForceField 40
brings to the table.”

—David Vaughn, *Sound & Vision*



SuperSub X

SuperCenter Series

Acoustically and cosmetically designed to complement our Floorstanders and Bookshelves, the SuperCenters’ sophisticated industrial design is both attractive and functional, minimizing their apparent size as well as enhancing their acoustic performance. Sonically, the SuperCenters employ our High-Velocity Folded-Ribbon AMT and offer the same naturally detailed, transparent sound all GoldenEar speakers are known for, but with surprising low-frequency extension and power-handling capacity for maximum dynamic range and impact.



SuperCenter Reference
\$2,800/each

- (1) Reference High-Velocity Folded Ribbon AMT Tweeter
- (4) 5.25" Mid/Bass Drivers
- (2) 6.75" x 8" Passive Radiators; One 7" x 10" Passive Planar
- Finish: Black Cloth, Gloss Black End Caps

35" W x 11" D x 5.75" H



SuperCenter XL
\$1,650/each

- (1) High-Velocity Folded Ribbon AMT Tweeter
- (2) 5.25" Mid/Bass Drivers
- (2) 6.75"x 8" Passive Radiators
- Finish: Black Cloth, Gloss Black End Caps

28.9" W x 11" D x 5.75" H



SuperCenter X
\$1,100/each

- (1) High-Velocity Folded Ribbon AMT Tweeter
- (2) 5.25" Mid/Bass Drivers
- (1) 7" x 10" Passive Radiator
- Finish: Black Cloth, Gloss Black End Caps

20" W x 11" D x 5.75" H

Soundbars

SuperCinema 3D Array soundbars combine the elegant form factor of a soundbar with the enveloping sonic performance that rivals a discrete-speaker surround-sound system. The SuperCinema’s unique 3D Array Technology ensures a convincing surround-sound experience, while our High-Velocity Folded-Ribbon AMT delivers the signature GoldenEar voice. While not required for thrilling performance, 3D Array soundbars are at their best and most immersive when mated to GoldenEar’s compact ForceField subwoofers.



3D Array XL
\$2,750/each

- (3) High-Velocity Folded Ribbon AMT Tweeters
- (8) 4.5" Mid/Bass Drivers
- Finish: Gloss Black

62.1" W x 2.9" D x 4.75" H



3D Array X
\$1,700/each

- (3) High-Velocity Folded Ribbon AMT Tweeters
- (6) 4.5" Mid/Bass Drivers
- Finish: Gloss Black

49" W x 2.9" D x 4.75" H



SuperSat Series

SuperSat satellites take advantage of our High-Velocity Folded Ribbon AMT tweeter to ensure that these versatile speakers sing with the same beautiful voice as all GoldenEar speakers. With their slim profiles, threaded wall-mount inserts, and adjustable feet, SuperSat satellite speakers and center-channel loudspeakers are thoughtfully designed to fulfill a wide variety of needs and applications — all with minimal impact on the listening environment itself.



SuperSat 60 and 60C

\$1,495/each

- (1) High-Velocity Folded Ribbon AMT Tweeter
- (4) 4.5" Mid/Bass Drivers
- (2) 4" x 7" Passive Radiators
- SuperSat 60: On-Wall/On-Shelf Front Main, Rear Surround
- SuperSat 60C: On-Wall/On-Shelf Center Channel
- Finish: Gloss Black

35.1" W x 2.8" D x 4.75" H



SuperSat 50 and 50C

\$895/each

- (1) High-Velocity Folded Ribbon AMT Tweeter
- (2) 4.5" Mid/Bass Drivers
- (2) 4" x 7" Passive Radiators
- SuperSat 50: On-Wall/On-Shelf Front Main, Rear Surround
- SuperSat 50C: On-Wall/On-Shelf Center Channel
- Finish: Gloss Black

26.8" W x 2.6" D x 4.75" H



SuperSat 3 and 3C

\$495/each

- (1) High-Velocity Folded Ribbon AMT Tweeter
- (2) 4.5" Mid/Bass Drivers
- SuperSat 3: On-Wall/On-Shelf Front Main, Rear Surround
- SuperSat 3C: On-Wall/On-Shelf Center Channel
- Finish: Gloss Black

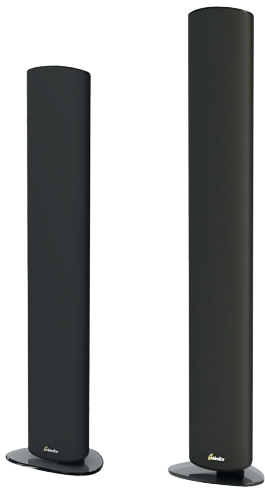
4.75" W x 2.8" D x 12.6" H



SuperStand

\$225/pair

- Compatible with GoldenEar SuperSat 3, SuperSat 50, and SuperSat 60 Speakers
- Two tempered glass bases with rubber feet.
- Pair of stands with interchangeable poles and L-brackets.
Poles for SuperSat 3: 32.5" Tall
Poles for SuperSat 50: 20.5" Tall
Pole for SuperSat 60: 14.3" Tall



Shelf/Table Stands

\$145/pair

- Compatible with SuperSat 50 and SuperSat 60 Speakers.
Shelf/Table Stand 60 Dimensions: Base: 8.9" W x 7.3" D
Shelf/Table Stand 50 Dimensions: 7.5" W x 5.8" D



SuperSwivel

\$75/pair

- Swiveling mount aims speakers toward listening position.
- Compatible with GoldenEar SuperSat Speakers and 3D Array Soundbars.
- Each bracket supports up to 11lbs.

2.2" W x 3.8" H x 3.5" D

Invisa Series In-Wall/In-Ceiling Speakers

GoldenEar Invisa Series In-Wall/In-Ceiling Speakers are engineered to deliver superb state-of-the-art sound while seamlessly blending with their surroundings to virtually disappear. All models but the 600 incorporate a High-Velocity Folded-Ribbon AMT Tweeter like the one found in all GoldenEar Floorstanding, Bookshelf, and Satellite speakers. And all models have complex multi-element crossovers to precisely blend the drivers for seamless, exquisitely natural sound quality. Their looks may be modest and unintrusive, but their sound simply cannot be ignored.



Invisa SPS
\$1,950/each

- (1) Rotatable Reference High-Velocity Folded Ribbon AMT Tweeter
- (2) 5.25" Mid/Bass drivers
- (2) 5.25" Lower Mid/Bass drivers

27.6" H x 8" W x 3.2" D
Grille: 28.3" H x 8.06" W
Cutout: 26.55" x 7.14"



Invisa JPS
\$995/each

- (1) Rotatable Reference High-Velocity Folded Ribbon AMT Tweeter
- (2) 4.5" Mid/Bass Drivers

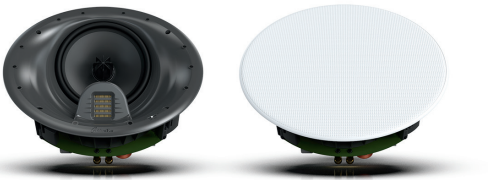
13.9" H x 7.2" W x 3.7" D
Grille: 14.5" H x 7.8" W
Cutout: 12.75" H x 6.27" W



Invisa MPX
\$895/each

- (1) High-Velocity Folded Ribbon AMT Tweeter
- (2) 4.5" Mid/Bass Drivers

13.9" H x 7.2" W x 3.7" D
Grille: 14.5" H x 7.8" W
Cutout: 12.75" H x 6.27" W



Invisa HTR 8000
\$1,295/each

- (1) Reference High-Velocity Folded Ribbon AMT Tweeter
- (1) 8" Mid/Bass Driver

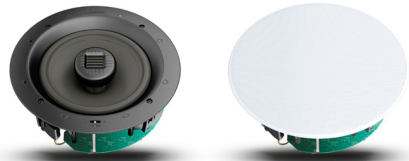
12.6" Diameter x 5.9" Deep
13.2" Diameter x 5.9" Deep (w/grille)
Cutout: 11.6" Diameter



Invisa HTR 7000
\$895/each

- (1) High-Velocity Folded Ribbon AMT Tweeter
- (1) 7" Mid/Bass Driver

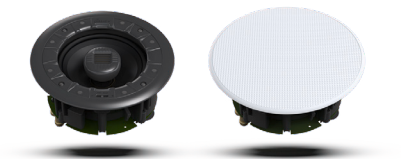
10" Diameter x 5" Deep
10.5 " Diameter x 5" Deep (w/grille)
Cutout: 9" Diameter



Invisa 850
\$850/each

- (1) Pivotalable Reference High-Velocity Folded Ribbon AMT Tweeter
- (1) 8" Mid/Bass Driver

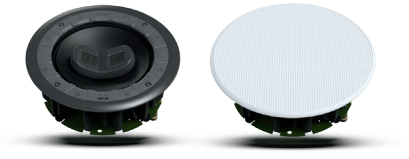
10" Diameter x 4.6" Deep
10.56" Diameter x 4.6" Deep (w/grille)
Cutout: 9" Diameter



Invisa 525
\$495/each

- (1) Pivotalable High-Velocity Folded Ribbon AMT Tweeter
- (1) 5.25" Mid/Bass Driver

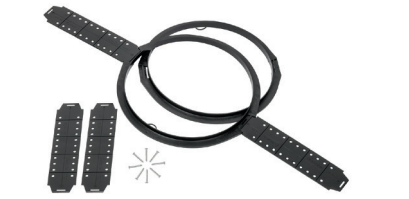
7.2" Diameter x 3.5" Deep
7.7" Diameter x 3.5" Deep (w/grille)
Cutout: 6.2" Diameter



Invisa SP 652
\$745/each

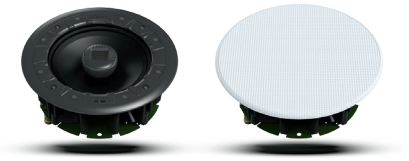
- (2) High-Velocity Folded Ribbon AMT Tweeter
- (1) 6.5" Mid/Bass Driver

8.1" Diameter x 3.4" Deep
8.6" Diameter x 3.5" Deep (w/grille)
Cutout: 7.1" Diameter



Invisa Rough-In Brackets
Contact your local dealer for pricing. Specify model.

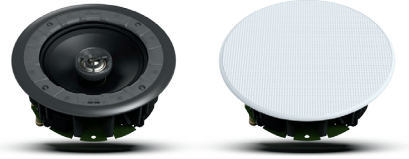
Invisa SP 525: 27.9" W x 0.62" D x 7.7" H
Invisa SP 600/650/652: 28.8" W x 0.62" D x 8.6" H
Invisa 850/HTR 7000: 30.7" W x 0.62" D x 10.6" H
Invisa HTR 8000: 33.3" W x 0.62" D x 13.1" H
Invisa MPX/JPS: 28.1" W x 0.62" D x 14.6" H
Invisa SPS: 28.8" W x 0.62" D x 28.3" H



Invisa 650
\$595/each

- (1) Pivotalable High-Velocity Folded Ribbon AMT Tweeter
- (1) 6.5" Mid/Bass Driver

8.1" Diameter x 3.5" Deep
8.7" Diameter x 3.5" Deep (w/grille)
Cutout: 7.1" Diameter



Invisa 600
\$395/each

- (1) Pivotalable Titanium Dome Tweeter with Silk Surround
- (1) 6.5" Mid/Bass Driver

8.1" Diameter x 3.5" Deep
8.7" Diameter x 3.5" Deep (w/grille)
Cutout: 7.1" Diameter



Invisa Square Grilles
Magnetically attached. Specify model.

Retail: N/A

Invisa SP 525: 7.7" W x 0.19" D x 7.7" H
Invisa SP 600/650/652: 8.7" W x 0.19" D x 8.7" H

Retail: N/A

Invisa 850/HTR 7000: 10.56" W x 0.19" D x 10.56" H
Invisa HTR 8000: 13.2" W x 0.19" D x 13.2" H



GoldenEar™

California, USA • The Netherlands
Tel +1 949.800.1800 • www.goldenear.com